



BYPASS CLOSET DOORS



ASHBURY
Pre-Finished 2-Panel Design

Molded

2

Panel
Design



Molded 2-Panel Design Closet Doors

Sliding Bypass Doors are the perfect closet doors for any room. Smoothly rolling from side to side, they give you full access to all of the space in your closet.



Technical Specifications

Model Name: Ashbury

Product Number	BY0108BWPR
Frame Finish / Color	Bright White
Function	Sliding Bypass
Door Insert Type	Pre-finished (Painted White) Molded Panel Board
Door Frame Type	Steel
Track Type	Steel
Product Grade	Residential/Commercial

Standard Sizes

Panels	Finished Openings		Actual Panel Size	
	Width	Height	Width	Height
2	48	80-81"	24 5/16"	78"
	60		30 5/16"	
	72		36 5/16"	

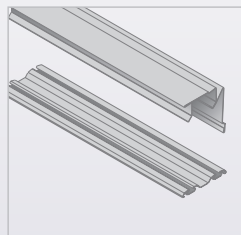
Product Numbers

48"	BY0108BWPRC048080
60"	BY0108BWPRC060080
72"	BY0108BWPRC072080

Features & Benefits

- Easy-Hang hardware allow doors to lift and hook onto the top roll track system for fast installation
- Easy to maintain, light-weight prefinished white 2 panel design boards
- Adjustable Easy-Hang hardware correct out-of-square door openings improving installation appearance and operation
- Low profile Invisi-Track provides a hazard-free opening that allows for easy cleaning and smooth traveling doors
- Slimline steel frame with integrated handle design
- Top roll sliding system with Quick-Click Anti-Jump bottom guide Connector ensures doors do not disengage from the track

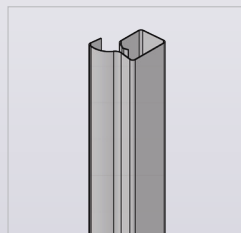
Track Type



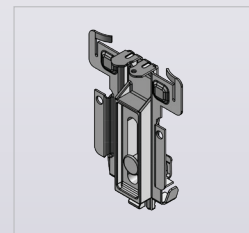
TRACKS | TOP ROLL



TOP ROLLER



SLIMLINE



BOTTOM GUIDE



1141 RYDER STREET
TUPELO, MS 38804

110 WALKER DRIVE
BRAMPTON, ON L6T 4H6

W. RENIN.COM
E. INFO@RENIN.COM

Share with us - #inspiredbyrenin

