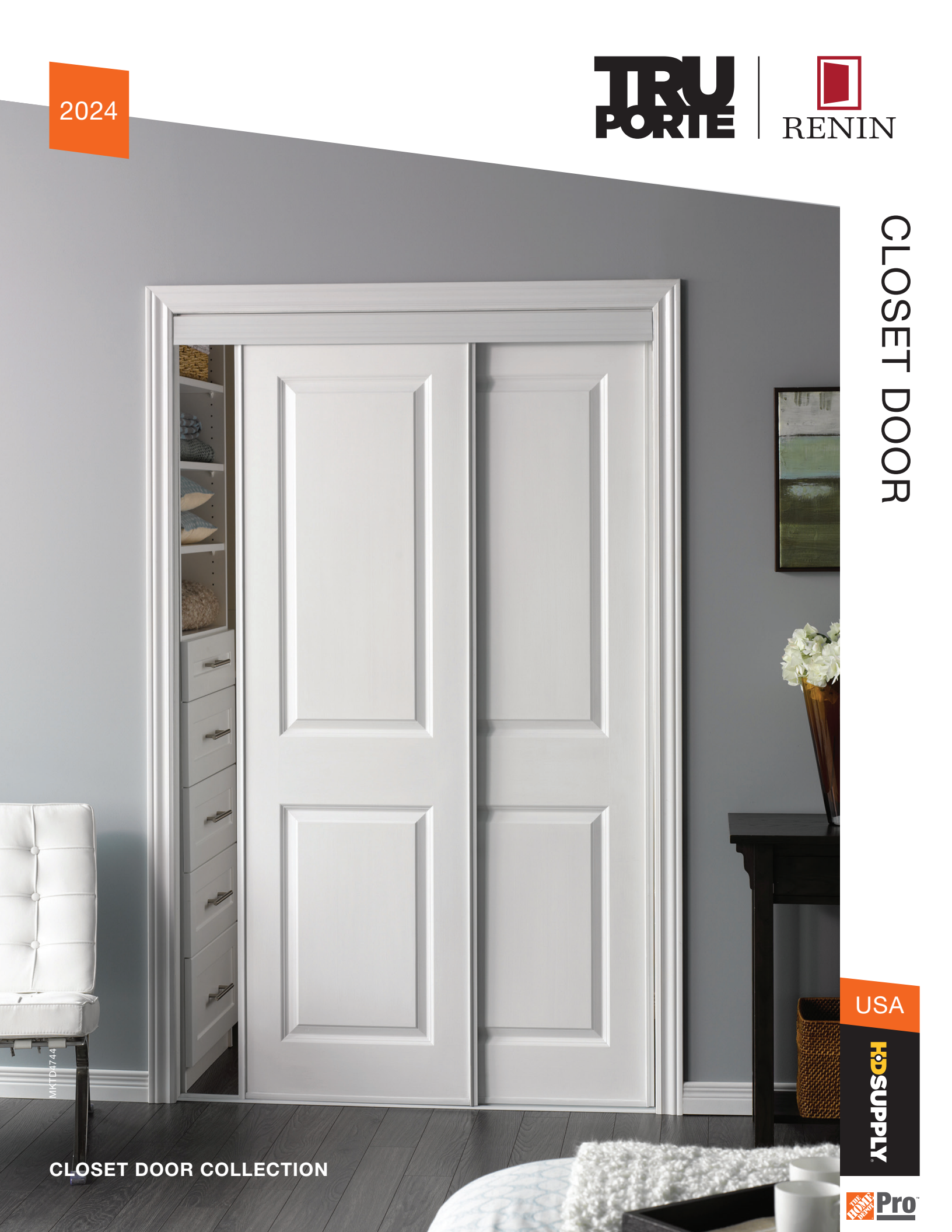


2024

TRU
PORTE

RENIN

CLOSET DOOR



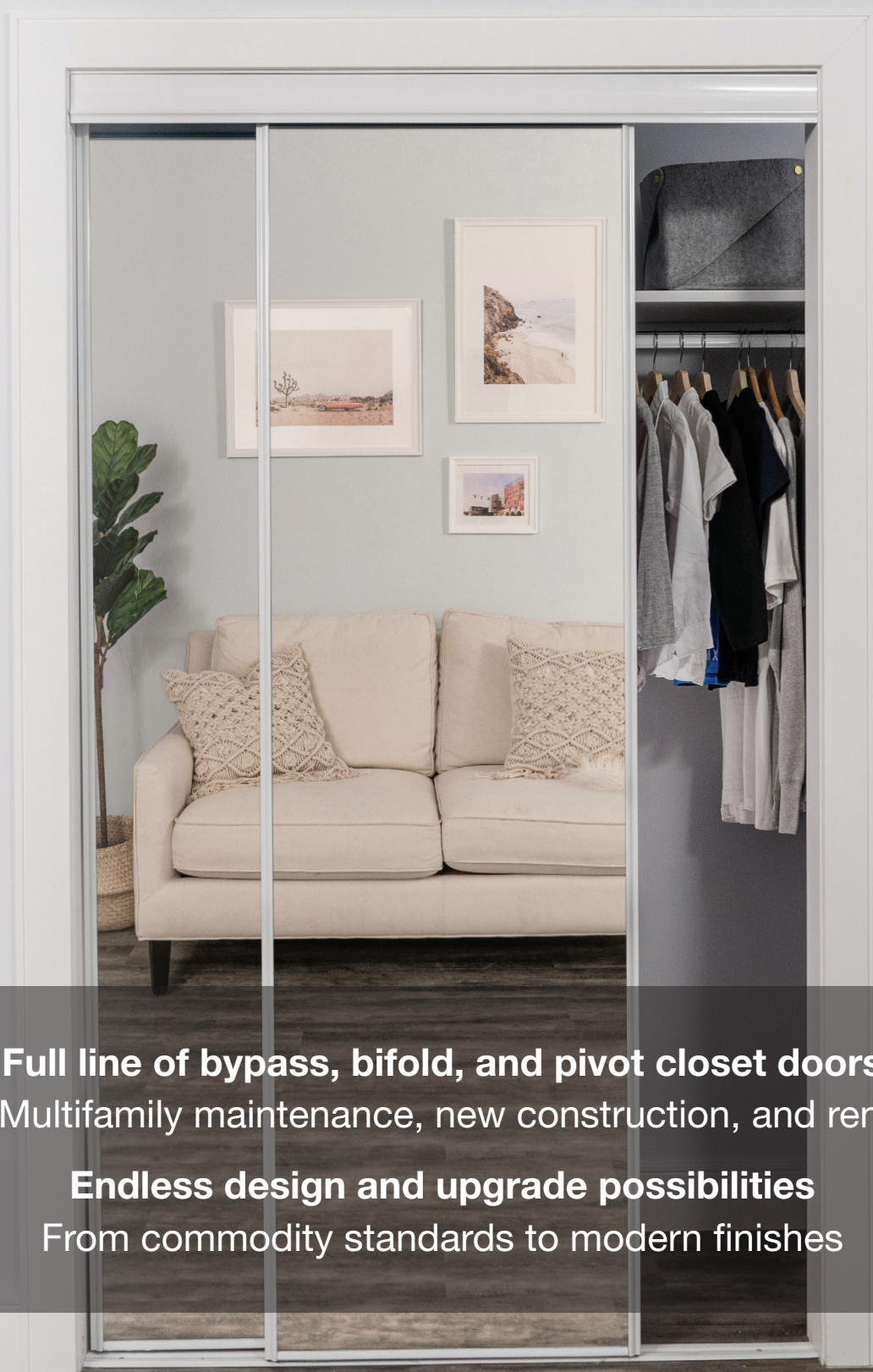
MKT01744

CLOSET DOOR COLLECTION

USA

HO
SUPPLY

Pro



Full line of bypass, bifold, and pivot closet doors
Ideal for Multifamily maintenance, new construction, and renovations.

Endless design and upgrade possibilities
From commodity standards to modern finishes

MODEL BY0120 / IN-STOCK

Slimline® Framed with Clear Mirror Insert

Closet Doors

Sometimes, what's within your closet needs a bit of covering up. Save space in small rooms by adding a sliding closet door to your enclosures, utilize a bifold closet door to stack up on style or try a pivot closet door to replace any memories of having a basic closet.



**PARSONS
FLUSH PANEL**

BY0100BWWT / IN-STOCK



**GEORGIAN
6-PANEL**

BY0106BWWT / IN-STOCK



**ASHBURY
2P SQUARE**

BY0108BWPR / Special Order



**SLIMLINE FRAMED
MIRROR**

BY0120 / BY0220 / IN-STOCK



**CONTEMPORARY
FRAMED MIRROR**

BY0230ASCL / IN-STOCK



**FRAMED MIRROR
BIFOLD**

BI0221BWCL / IN-STOCK



**3-LITE FROSTED
GLASS**

EU2030BWFG / Special Order



**HARMONY MIRROR
BYPASS**

EU3210PW / Special Order



**3-LITE BIFOLD
GLASS**

EU3150IA / Special Order



**1-LITE PIVOT
GLASS**

PV5401ES / Special Order



**4-LITE BYPASS
BLACK**

CO485 / Special Order



**ROOM DIVIDER
SYSTEMS**

7041 / Special Order

Flush Panel Design Closet Doors

Sliding Bypass Doors are the perfect closet doors for any room. Smoothly rolling from side to side, they give you full access to all of the space in your closet.



Frame Finish / Color



Bright White

Features & Benefits

- Easy-Hang hardware allow doors to lift and hook onto the top roll track system for fast installation
- Easy to maintain, light-weight prefinished flat white boards
- Adjustable Easy-Hang hardware correct out-of-square door openings improving installation appearance and operation
- Low profile Invisi-Track provides a hazard-free opening that allows for easy cleaning and smooth traveling doors
- Slimline steel frame with integrated handle design
- Top roll sliding system with Quick-Click Anti-Jump bottom guide Connector ensures doors do not disengage from the track

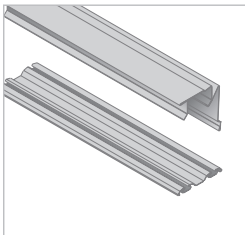
Technical Specifications

Model Name: Parsons	
Product Number	BY0100BWWT
Frame Finish / Color	Bright White
Function	Sliding Bypass
Door Insert Type	Pre-finished (Painted White) Panel Board
Door Frame Type	Steel
Track Type	Top Roll System Steel
Product Grade	Residential/Commercial

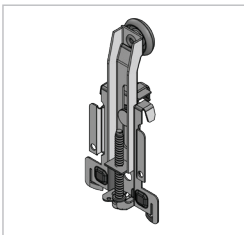
Size	Renin Model #	HD Supply Part #	THD Pro Store SKU
48" x 80"	BY0100BWWTE048080	833155	1000959367
60" x 80"	BY0100BWWTE060080	833160	1008408909
72" x 80"	BY0100BWWTE072080	833156	1008408908
84" x 80"	BY0100BWWTC084080	S/O	Pro Quote Catalog
96" x 80"	BY0100BWWTE096080	833157	Pro Quote Catalog
120" x 80"	BY0100BWWTC120080	833158	Pro Quote Catalog
48" x 96"	BY0100BWWTC048096	833187	Pro Quote Catalog
60" x 96"	BY0100BWWTC060096	833188	Pro Quote Catalog
72" x 96"	BY0100BWWTC072096	833189	Pro Quote Catalog

*Custom Sizes Available in this product model

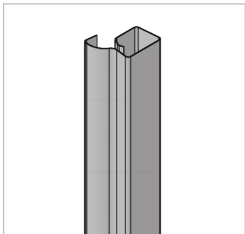
Door Components



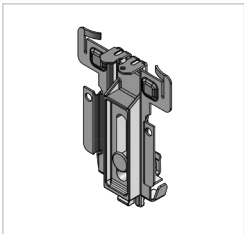
Tracks | Top Roll



Top Roller



Slimline



Bottom Guide

Molded 6-Panel Design Closet Doors

Sliding Bypass Doors are the perfect closet doors for any room. Smoothly rolling from side to side, they give you full access to all of the space in your closet.



Frame Finish / Color



Bright White

Features & Benefits

- Easy-Hang hardware allow doors to lift and hook onto the top roll track system for fast installation
- Easy to maintain, light-weight prefinished flat white boards
- Adjustable Easy-Hang hardware correct out-of-square door openings improving installation appearance and operation
- Low profile Invisi-Track provides a hazard-free opening that allows for easy cleaning and smooth traveling doors
- Slimline steel frame with integrated handle design
- Top roll sliding system with Quick-Click Anti-Jump bottom guide Connector ensures doors do not disengage from the track

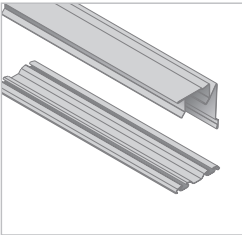
Technical Specifications

Model Name: Parsons	
Product Number	BY0106BWWT
Frame Finish / Color	Bright White
Function	Sliding Bypass
Door Insert Type	Pre-finished (Painted White) Panel Board
Door Frame Type	Steel
Track Type	Top Roll System Steel
Product Grade	Residential/Commercial

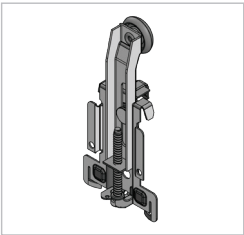
Size	Renin Model #	HD Supply Part #	THD Pro Store SKU
48" x 80"	BY0106BWWTE048080	833251	200618
60" x 80"	BY0106BWWTE060080	833252	200863
72" x 80"	BY0106BWWTE072080	833253	201216
48" x 96"	BY0106BWWTC048096	833257	Pro Quote Catalog
60" x 96"	BY0106BWWTC060096	833258	Pro Quote Catalog
72" x 96"	BY0106BWWTC072096	833259	Pro Quote Catalog

*NO Custom sizes available in this style

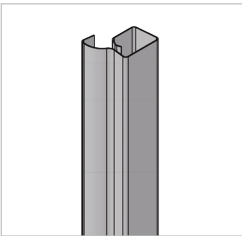
Door Components



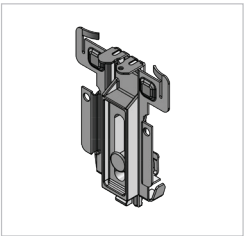
Tracks | Top Roll



Top Roller



Slimline



Bottom Guide

Molded 2-Panel Design Closet Doors

Sliding Bypass Doors are the perfect closet doors for any room. Smoothly rolling from side to side, they give you full access to all of the space in your closet.



Technical Specifications

Model Name: Ashbury	
Product Number	BY0108BWPR
Frame Finish / Color	Bright White
Function	Sliding Bypass
Door Insert Type	Pre-finished (Painted White) Molded Panel Board
Door Frame Type	Steel
Track Type	Top Roll System Steel
Product Grade	Residential/Commercial

Size	Renin Model #	HD Supply Part #	THD Pro Store SKU
48" x 80"	BY0108BWPRC048080	Special Order	Pro Quote Catalog
60" x 80"	BY0108BWPRC060080	Special Order	Pro Quote Catalog
72" x 80"	BY0108BWPRC072080	Special Order	Pro Quote Catalog

*NO Custom sizes available in this style

Frame Finish / Color

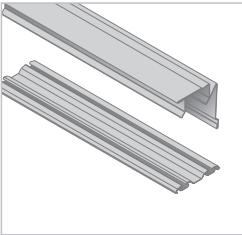


Bright White

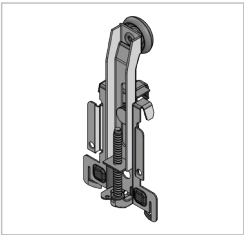
Features & Benefits

- Easy-Hang hardware allow doors to lift and hook onto the top roll track system for fast installation
- Easy to maintain, light-weight prefinished flat white boards
- Adjustable Easy-Hang hardware correct out-of-square door openings improving installation appearance and operation
- Low profile Invisi-Track provides a hazard-free opening that allows for easy cleaning and smooth traveling doors
- Slimline steel frame with integrated handle design
- Top roll sliding system with Quick-Click Anti-Jump bottom guide Connector ensures doors do not disengage from the track

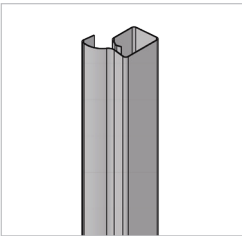
Door Components



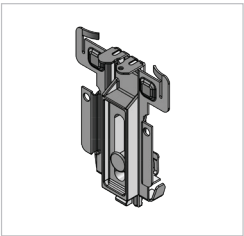
Tracks | Top Roll



Top Roller



Slimline



Bottom Guide

Slimline Framed Mirror Closet Doors

Sliding Bypass Doors are the perfect closet doors for any room. Smoothly rolling from side to side, they give you full access to all of the space in your closet.



Technical Specifications

Model Name: Model 120	
Product Number	BY0120ASCL, BY0120BWCL
Frame Finish / Color	Arctic Silver, Bright White, Satin Gold, Black
Function	Sliding Bypass
Door Insert Type	Pre-finished Clear Mirror Insert
Door Frame Type	Steel
Track Type	Top Roll System Steel
Product Grade	Residential/Commercial

Size	Renin Model #	HD Supply Part #	THD Pro Store SKU
36" x 80"	BY0120BWCLE036080	S/O	Pro Quote Catalog
48" x 80"	BY0120BWCLE048080	833170	1008408906
60" x 80"	BY0120BWCLE060080	833172	1008408907
72" x 80"	BY0120BWCLE072080	833173	1008408910
36" x 80"	BY0120ASCLC036080	S/O	Pro Quote Catalog
48" x 80"	BY0120ASCLC048080	833175	100438
60" x 80"	BY0120ASCLC060080	833176	101146
72" x 80"	BY0120ASCLC072080	833177	Pro Quote Catalog

*Custom sizes available to be made in Model 220

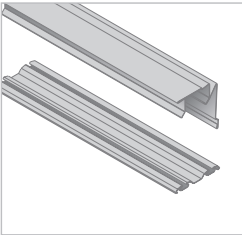
Frame Finish / Color



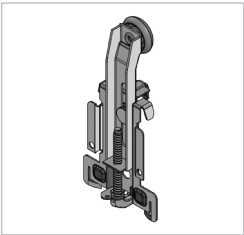
Features & Benefits

- Easy-Hang hardware allow doors to lift and hook onto the top roll track system for fast installation
- Easy to maintain, light-weight prefinished clear mirror insert
- Adjustable Easy-Hang hardware correct out-of-square door openings improving installation appearance and operation
- Low profile Invisi-Track provides a hazard-free opening that allows for easy cleaning and smooth traveling doors
- Slimline steel frame with integrated handle design
- Top roll sliding system with Quick-Click Anti-Jump Connector ensures doors do not disengage from the track

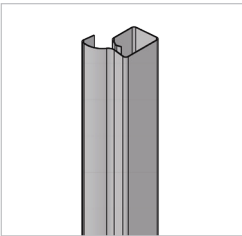
Door Components



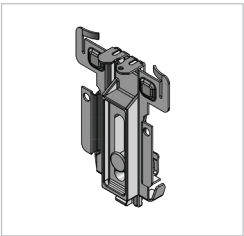
Tracks | Top Roll



Top Roller



Slimline



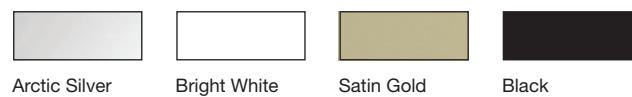
Bottom Guide

Slimline Framed Mirror Design Closet Doors

Sliding Bypass Doors are the perfect closet doors for any room. Smoothly rolling from side to side, they give you full access to all of the space in your closet.



Frame Finish / Color



Features & Benefits

- Easy-Glide hardware allow doors to travel effortlessly
- Easy to maintain, Safety-Shield backed clear-mirror panels
- Adjustable Quick-Click guides correct out-of-square door openings improving installation appearance and operation
- Low profile Invisi-Track provides a hazard-free opening that allows for easy cleaning and smooth traveling doors
- Slimline steel frame with integrated handle design
- Bottom roll sliding system with Quick-Click Anti-Jump Connector that ensures doors do not disengage from the track

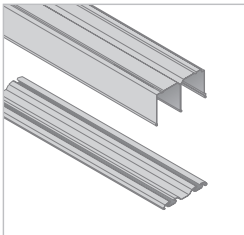
Technical Specifications

Model Name: Model 220	
Product Number	BY0220ASWT
Frame Finish / Color	Arctic Silver, Bright White, Satin Gold, Black
Function	Sliding Bypass
Door Insert Type	Pre-finished Clear Mirror Insert
Door Frame Type	Steel
Track Type	Bottom Roll System Steel
Product Grade	Residential/Commercial

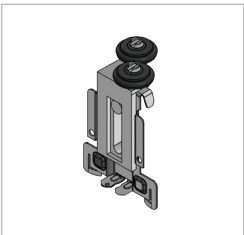
Size	Renin Model #	HD Supply Part #	THD Pro Store SKU
48" x 80"	BY0220MBCLC048080	Stock Coming Soon	Stock Coming Soon
60" x 80"	BY0220MBCLC060080	Stock Coming Soon	Stock Coming Soon
72" x 80"	BY0220MBCLC072080	Stock Coming Soon	Stock Coming Soon
96" x 80"	BY0220MBCLC096080	Special Order	Pro Quote Center
108" x 80"	BY0220MBCLC108080	Special Order	Pro Quote Center
120" x 80"	BY0220MBCLC120080	Special Order	Pro Quote Center
144" x 80"	BY0220MBCLC144080	Special Order	Pro Quote Center
192" x 80"	BY0220MBCLC192080	Special Order	Pro Quote Center

*Custom sizes available in this product model
* All widths also available in 96" tall

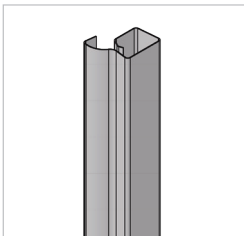
Door Components



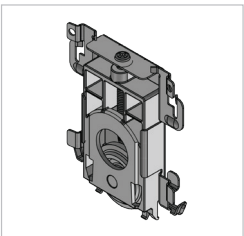
Tracks | Bottom Roll



Top Guide



Slimline



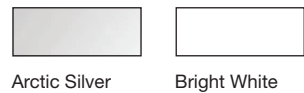
Bottom Roller

Contemporary Framed Mirror Design Closet Doors

Sliding Bypass Doors are the perfect closet doors for any room. Smoothly rolling from side to side, they give you full access to all of the space in your closet.



Frame Finish / Color



Features & Benefits

- Easy-Glide hardware allow doors to travel effortlessly
- Easy to maintain, Safety-Shield backed clear-mirror panels
- Adjustable Quick-Click guides correct out-of-square door openings improving installation appearance and operation
- Low profile Invisi-Track provides a hazard-free opening that allows for easy cleaning and smooth traveling doors
- Contemporary Wide Curved Stile steel frame with integrated handle design
- Bottom roll sliding system with Quick-Click Anti-Jump Connector that ensures doors do not disengage from the track

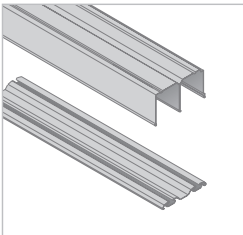
Technical Specifications

Model Name: Model 230	
Product Number	BY0230ASCL, BY0230BWCL
Frame Finish / Color	Arctic Silver, Bright White
Function	Sliding Bypass
Door Insert Type	Pre-finished Clear Mirror Insert
Door Frame Type	Steel
Track Type	Bottom Roll System Steel
Product Grade	Residential/Commercial

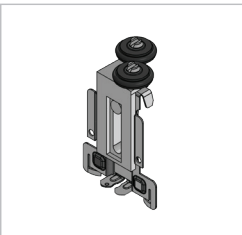
Size	Renin Model #	HD Supply Part #	THD Pro Store SKU
48" x 80"	BY0230BWCLE048080	833166	793975
60" x 80"	BY0230BWCLE060080	833168	793976
72" x 80"	BY0230BWCLE072080	833171	793978
96" x 80"	BY0230BWCLE096080	833190	Pro Quote Center
48" x 96"	BY0230BWCLC048096	833184	Pro Quote Center
60" x 96"	BY0230BWCLC060096	833185	Pro Quote Center
72" x 96"	BY0230BWCLC072096	833186	Pro Quote Center
96" x 96"	BY0230BWCLC096096	833191	Pro Quote Center
48" x 80"	BY0230ASCLE048080	833151	Pro Quote Center
60" x 80"	BY0230ASCLE060080	833152	Pro Quote Center
72" x 80"	BY0230ASCLE072080	833153	Pro Quote Center
84" x 80"	BY0230ASCLE084080	Special Order	Pro Quote Center
96" x 80"	BY0230ASCLE096080	833154	Pro Quote Center

* Custom sizes available in this product model

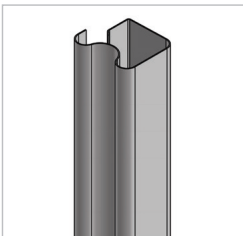
Door Components



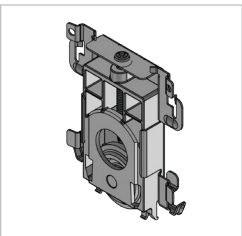
Tracks | Bottom Roll



Top Guide



Contemporary Wide Curved



Bottom Roller



3-LITE BIFOLD GLASS

EU3510IA | Special Order

Contemporary Framed Mirror Design Closet Doors

We make it easy to slide sophistication across your closet with sliding bifold doors.



Frame Finish / Color



Bright White

Features & Benefits

- Offset pivot action creates an additional 4" for more complete access to your closet or space
- Increased adjustability for out-of-square door openings improves door appearance and operation
- Easy-Roll Connector results in less friction on the track for smoother travel
- Low profile, direct floor-mounted and pre-drilled bottom track for quick installation makes cleaning a breeze
- A metal pull attached to the inside frame stile between panels is used to operate the door

Technical Specifications

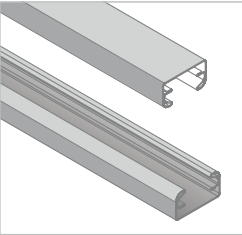
Model Name: Model 221

Product Number	BI0221BWCL
Frame Finish / Color	Bright White
Function	Sliding Bifold
Door Insert Type	Pre-finished Clear Mirror Insert
Door Frame Type	Steel
Track Type	Bottom Roll System Steel
Product Grade	Residential/Commercial

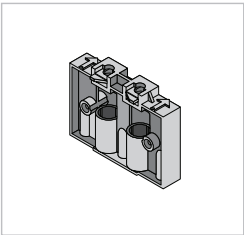
Size	Renin Model #	HD Supply Part #	THD Pro Store SKU
24" x 80"	BI0221BWCLC024080	205300	Pro Quote Catalog
30" x 80"	BI0221BWCLC030080	205305	Pro Quote Catalog
36" x 80"	BI0221BWCLC036080	205310	Pro Quote Catalog
48" x 80"	BI0221BWCLC048080	S/O	Pro Quote Catalog
60" x 80"	BI0221BWCLC060080	S/O	Pro Quote Catalog
72" x 80"	BI0221BWCLC072080	S/O	Pro Quote Catalog

*Custom sizes available in this product model

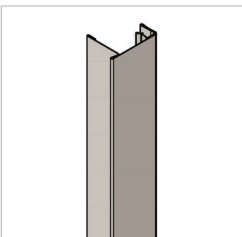
Door Components



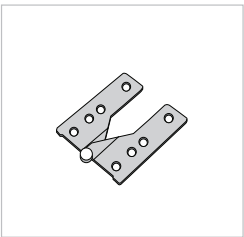
Tracks | Bottom Roll



Corner Block



Slimline



Hinge

Contemporary Framed Mirror Design Closet Doors

We make it easy to slide sophistication across your closet with sliding bifold doors.



**PRE-FINISHED WHITE SMOOTH,
FLUSH PANEL**

BI0221BW10

Product Numbers

24" x 80"	BI0221BW10E024080
30" x 80"	BI0221BW10E030080
36" x 80"	BI0221BW10E036080
48" x 80"	BI0221BW10E048080
60" x 80"	BI0221BW10E060080
72" x 80"	BI0221BW10E072080

*Custom sizes available in this style



**PRE-FINISHED WHITE TEXTURED,
MOLDED 6-PANEL**

BI0221BW16

Product Numbers

24" x 80"	BI0221BW16E024080
30" x 80"	BI0221BW16E030080
36" x 80"	BI0221BW16E036080
48" x 80"	BI0221BW16E048080
60" x 80"	BI0221BW16E060080
72" x 80"	BI0221BW16E072080

*NO custom sizes in this product style



**PRE-FINISHED WHITE SMOOTH,
MOLDED 2-PANEL**

BI0221BW18

Product Numbers

24" x 80"	BI0221BW18E024080
30" x 80"	BI0221BW18E030080
36" x 80"	BI0221BW18E036080
48" x 80"	BI0221BW18E048080
60" x 80"	BI0221BW18E060080
72" x 80"	BI0221BW18E072080

*NO custom sizes in this product style

Frameless Closet Doors

We make it easy to slide sophistication across your closet with sliding bifold doors.



FRAMELESS BIFOLD, POLISHED
EDGE MIRROR

BI321PASCL

Technical Specifications

Model Name: Model 321	
Product Number	BI0321BAS, BI0321BBW
Frame Finish / Color	Arctic Silver, Bright White
Function	Sliding Bifold
Door Insert Type	Pre-finished Clear Mirror Insert,(Beveled or Polished Edge Mirror)
Door Frame Type	Steel
Track Type	Bottom Roll System Steel
Product Grade	Residential/Commercial

Size	Renin Model #	HD Supply Part #	THD Pro Store SKU
24" x 80"	BI321PASCL024080	S/O	Pro Quote Catalog
30" x 80"	BI321PASCL030080	S/O	Pro Quote Catalog
36" x 80"	BI321PASCL036080	S/O	Pro Quote Catalog
48" x 80"	BI321PASCL048080	S/O	Pro Quote Catalog
60" x 80"	BI321PASCL060080	S/O	Pro Quote Catalog
72" x 80"	BI321PASCL072080	S/O	Pro Quote Catalog

*Custom Sizes available in this style



FRAMELESS BIFOLD, BEVELED
EDGE MIRROR

BI321BBW

Size	Renin Model #	HD Supply Part #	THD Pro Store SKU
24" x 80"	BI321BBWCLC024080	S/O	252673
30" x 80"	BI321BBWCLC030080	S/O	252673
36" x 80"	BI321BBWCLC036080	S/O	252673
48" x 80"	BI321BBWCLC048080	S/O	Pro Quote Catalog
60" x 80"	BI321BBWCLC060080	S/O	Pro Quote Catalog
72" x 80"	BI321BBWCLC072080	S/O	Pro Quote Catalog

*Custom Sizes available in this style

SPECIAL ORDER

Full line of bypass, bifold, and pivot closet doors

Ideal for Multifamily maintenance, new construction, and renovations.

Endless design and upgrade possibilities

From commodity standards to modern finishes

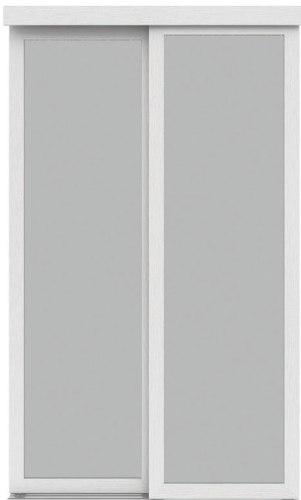
LACE 4-LITE X-DESIGN | PURE WHITE

CLEAR MIRROR | EU3265PW

Closet Doors

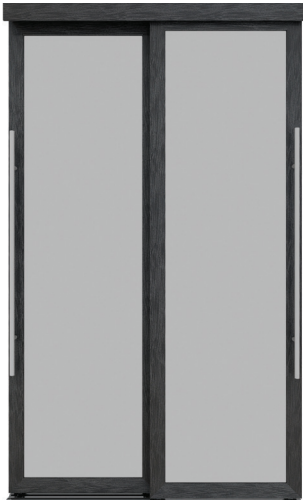
Pre-finished Engineered Wood Bypass Door

Sliding bypass doors are the perfect closet doors for any room. Smoothly rolling from side to side, they give you access to all the space in our closet. Unlike a hinged door, they do not require space within your room to operate. The sleek look of sliding bypass doors conceals clothing and keeps storage out of sight.



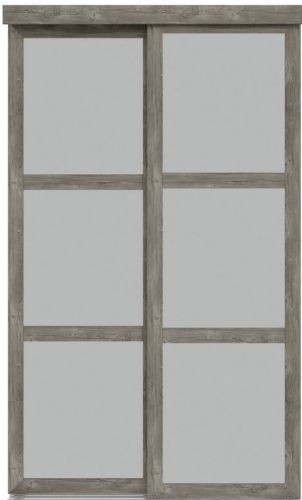
**1-LITE
SMOOTH WHITE**

Opaque Glass | CO425
Clear Mirror | CO125



**LOUNGE
WOODGRAIN BLACK**

Opaque Glass | CO460L
Clear Mirror | CO160L



**3-LITE
ANTIQUE**

Opaque Glass | CO4823
Clear Mirror | CO1823



**4-LITE
GUNSTOCK**

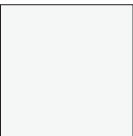
Opaque Glass | CO434
Clear Mirror | CO134



**5-LITE
CHOCOLATE**

Opaque Glass | CO4175
Clear Mirror | CO1175

COLORS AVAILABLE



BRIGHT WHITE



WOODGRAIN
BLACK



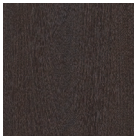
ANTIQUE



GUNSTOCK



CHOCOLATE



MOCHA

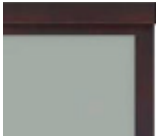


STEEL GREY

AVAILABLE IN



CLEAR MIRROR
INSERT



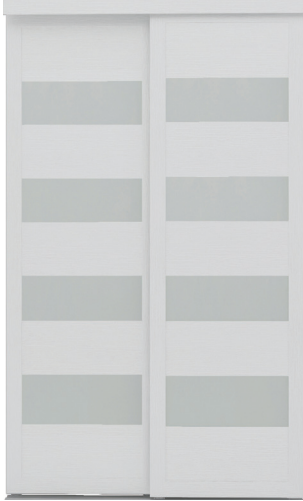
OPAQUE GLASS
INSERT

*Custom Sizes available in these styles

Closet Doors

Pre-finished Engineered Wood Bypass Door

Sliding bypass doors are the perfect closet doors for any room. Smoothly rolling from side to side, they give you access to all the space in our closet. Unlike a hinged door, they do not require space within your room to operate. The sleek look of sliding bypass doors conceals clothing and keeps storage out of sight.



**4-LITE
BRIGHT WHITE**

Opaque Glass | CO488



**4-LITE
ANTIQUE**

Opaque Glass | CO



**4-LITE
WOODGRAIN BLACK**

Opaque Glass | CO485



**4-LITE
GUNSTOCK**

Opaque Glass | CO454

*Custom Sizes available in these styles

Decor Wrap Engineered Wood Framed Bypass Door

Sliding bypass doors are the perfect closet doors for any room. A modern take on sliding doors with designs to match all door styles within the home. Smoothly rolling from side to side, they give you access to all the space in our closet. Unlike a hinged door, they do not require space within your room to operate. The sleek look of sliding bypass doors conceals clothing and keeps storage out of sight.



**COUNTRYSIDE
ANTIQUE**

COB59K



**COUNTRYSIDE
WHITE**

COL25K



**MISSION
WHITE**

COL57

*NO custom sizes available in these styles

Closet Doors

Pre-finished Engineered Wood Bypass & Pivot Door

Our Urban Closet Door Series provides a contemporary alternative to traditional closet doors. Inspired by the style and materials of today's interior barn doors, our Urban series doors are meticulously crafted with the combination of materials including our pre-finished, scratch-resistant engineered wood, frosted tempered glass or traditional clear mirror.



**HARMONY 1-LITE
PURE WHITE | CLEAR MIRROR**

EU3210PW

Product Numbers

48" x 80"	EU3210PWCLE048080
60" x 80"	EU3210PWCLE060080
72" x 80"	EU3210PWCLE072080



**TWILIGHT 1-LITE IN PURE WHITE
TEMPERED FROSTED GLASS**

EU3220PW

Product Numbers

48" x 80"	EU3220PWFGE048080
60" x 80"	EU3220PWFGE060080
72" x 80"	EU3220PWFGE072080



**LACE 4-LITE X-DESIGN
PURE WHITE | CLEAR MIRROR**

EU3265PW

Product Numbers

48" x 80"	EU3265PWCLE048080
60" x 80"	EU3265PWCLE060080
72" x 80"	EU3265PWCLE072080

*NO custom sizes available in these styles

Closet Doors

Pre-finished Engineered Wood Bypass Door

Unlike a hinged door, they do not require space to operate. The sleek look of sliding bypass closet doors conceals clothing and keeps storage out of sight. Our wood frame & glass inserts modernize your space and add light by selecting a bypass door built with full length frosted glass. With a multitude of options you can select an insert pattern to make your design more dynamic.



**1-LITE
BRIGHT WHITE**

EU2010BW

Product Numbers

48" x 80"	EU3210PWCLE048080
60" x 80"	EU3210PWCLE060080
72" x 80"	EU3210PWCLE072080



**1-LITE
ESPRESSO**

EU2230ES

Product Numbers

48" x 80"	EU2230ESFGE048080
60" x 80"	EU2230ESFGE060080
72" x 80"	EU2230ESFGE072080



**1-LITE
IRON AGE**

EU2450IA

Product Numbers

48" x 80"	EU2450IAFGE048080
60" x 80"	EU2450IAFGE060080
72" x 80"	EU2450IAFGE072080



**5-LITE
ESPRESSO**

EU2240ES

Product Numbers

48" x 80"	EU2240ESFGE048080
60" x 80"	EU2240ESFGE060080
72" x 80"	EU2240ESFGE072080



**5-LITE
IRON AGE**

EU2470IA

Product Numbers

48" x 80"	EU2470IAFGE048080
60" x 80"	EU2470IAFGE060080
72" x 80"	EU2470IAFGE072080



**3-LITE
OFF-WHITE**

EU2030BW

Product Numbers

48" x 80"	EU2030BWFGE048080
60" x 80"	EU2030BWFGE060080
72" x 80"	EU2030BWFGE072080



**3-LITE
ESPRESSO**

EU2290ES

Product Numbers

48" x 80"	EU2290ESFGE048080
60" x 80"	EU2290ESFGE060080
72" x 80"	EU2290ESFGE072080



**3-LITE
IRON AGE**

EU2460IA

Product Numbers

48" x 80"	EU2460IAFGE048080
60" x 80"	EU2460IAFGE060080
72" x 80"	EU2460IAFGE072080

Closet Doors

Pre-finished Engineered Wood Bifold Door

Sleek and unobtrusive, our sliding bifold closet door systems are available with two or four panels that fold up to maximize your opening.



**1-LITE
OFF-WHITE**

EU3010BW

Product Numbers

24" x 80"	EU3010BWFGE024080
30" x 80"	EU3010BWFGE030080
36" x 80"	EU3010BWFGE036080



**1-LITE
ESPRESSO**

EU3030ES

Product Numbers

24" x 80"	EU3030ESFGE024080
30" x 80"	EU3030ESFGE030080
36" x 80"	EU3030ESFGE036080



**1-LITE
IRON AGE**

EU3110IA

Product Numbers

24" x 80"	EU3110IAFGE024080
30" x 80"	EU3110IAFGE030080
36" x 80"	EU3110IAFGE036080



**3-LITE
OFF-WHITE**

EU3080BW

Product Numbers

24" x 80"	EU3080BWFGE024080
30" x 80"	EU3080BWFGE030080
36" x 80"	EU3080BWFGE036080



**3-LITE
ESPRESSO**

EU3100ES

Product Numbers

24" x 80"	EU3100ESFGE024080
30" x 80"	EU3100ESFGE030080
36" x 80"	EU3100ESFGE036080



**3-LITE
IRON AGE**

EU3150IA

Product Numbers

24" x 80"	EU3150IAFGE024080
30" x 80"	EU3150IAFGE030080
36" x 80"	EU3150IAFGE036080

Closet Doors

Pre-finished Engineered Wood Pivot Door

Pivot closet doors swing open making them the perfect solution by providing maximum access to your closet or storage space.



**1-LITE
OFF-WHITE**

PV5401BW

Product Numbers

24" x 80"	PV5401BWFGC024080
30" x 80"	PV5401BWFGC030080
36" x 80"	PV5401BWFGC036080



**1-LITE
ESPRESSO**

PV5401ES

Product Numbers

24" x 80"	PV5401ESFGE024080
30" x 80"	PV5401ESFGE030080
36" x 80"	PV5401ESFGE036080



**1-LITE
IRON AGE**

PV5401IA

Product Numbers

24" x 80"	PV5401IAFGE024080
30" x 80"	PV5401IAFGE030080
36" x 80"	PV5401IAFGE036080



**3-LITE
OFF-WHITE**

PV5402BW

Product Numbers

24" x 80"	PV5402BWFGC024080
30" x 80"	PV5402BWFGC030080
36" x 80"	PV5402BWFGC036080



**3-LITE
ESPRESSO**

PV5402ES

Product Numbers

24" x 80"	PV5402ESFGC024080
30" x 80"	PV5402ESFGC030080
36" x 80"	PV5402ESFGC036080



**3-LITE
IRON AGE**

PV5402IA

Product Numbers

24" x 80"	PV5402IAFGE024080
30" x 80"	PV5402IAFGE030080
36" x 80"	PV5402IAFGE036080



**CROCHET 8X-LITE
GRAPHITE GRAY**

PV3330GG

Product Numbers

48" x 80"	PV3330GGFGE048080
60" x 80"	PV3330GGFGE060080
72" x 80"	PV3330GGFGE072080



**PROVINCIAL 8-LITE
PURE WHITE**

PV3340PW

Product Numbers

48" x 80"	PV3330PWFGC048080
60" x 80"	PV3330PWFGC060080
72" x 80"	PV3330PWFGC072080

Room Divider Systems

Across-The-Wall | Extruded Aluminum Door Systems

In fashionable hospitality and commercial environments, interior designers are always on the lookout for stylish products that will enhance the decor of guest rooms while adding to the visitor experience for the busy commercial or vacation traveler. These extruded aluminum doors combine the benefits of quality, lightweight stile and rail construction with a fully glazed glass appearance to let light in or reflect light to brighten the environment.



7041 | TOP ROLL SLIDING DOOR 1-PANEL PASSAGE WAY DOOR SYSTEM

Top rolled system means no bottom track making it a great option for hard surface flooring.

Frame Finishes



Satin



Black

Insert Finishes



Clear
Mirror



Semi-Opaque
Glass

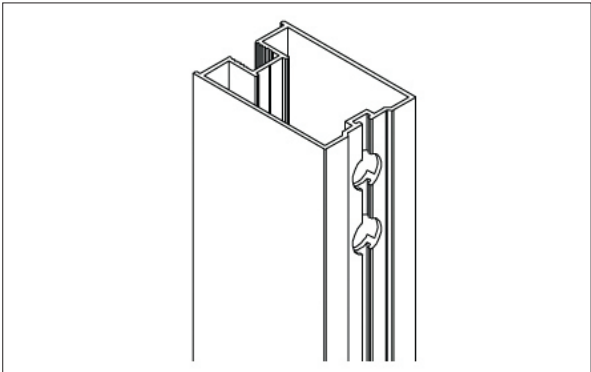


White or Black
Back Painted
Glass



Clear Glass

PANELS	PANEL SIZE	
QUANTITY	WIDTH	HEIGHT
1	36"	90"
	42"	
	48"	110"
	60"	



STILE PROFILE

Standard Sizes

- 36" x 84"
- 42" x 84"
- Custom sizes available in both width & height. Additional panels available based on opening width. Contact us for more information

Features & Benefits

- Modern 2" x 1-3/8" extruded aluminum frame is lightweight for a quiet opening and closing action
- Various frame and insert finishes and materials to match your interior decor
- Opening force meets the requirements of ADA
- Precision bearing rollers provide a smooth, quiet slide that has been tested over 100,000 open/close cycles
- North American Made

Specifications

- Clear Mirror | Double-sided 2.8mm with Safety Backing
- White/Black Back Painted Glass | Double-Sided 2.8mm with Safety Backing
- Semi-Opaque Glass | 6mm Frosted Laminated Glass
- Clear Glass | 6mm Frosted Laminated Glass

Room Divider Systems

Across-The-Wall | Extruded Aluminum Door Systems

In fashionable hospitality and commercial environments, interior designers are always on the lookout for stylish products that will enhance the decor of guest rooms while adding to the visitor experience for the busy commercial or vacation traveler. These extruded aluminum doors combine the benefits of quality, lightweight stile and rail construction with a fully glazed glass appearance to let light in or reflect light to brighten the environment.



7039 | BOTTOM ROLL BYPASS 3-PANEL ROOM DIVIDER

Bottom rolled system utilizes ADA compliant tracks for 2-panel or multi-panel solutions allowing wheel-chair accessibility.

Frame Finishes



Satin



Black

Insert Finishes



Clear
Mirror



Semi-Opaque
Glass



White or Black
Back Painted
Glass

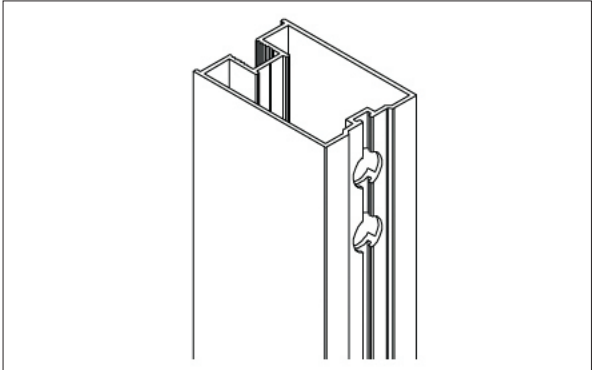


Clear Glass

Features & Benefits

- Modern 2" x 1-3/8" extruded aluminum frame is lightweight for a quiet opening and closing action
- Various frame and insert finishes and materials to match your interior decor
- Opening force meets the requirements of ADA
- Precision bearing rollers provide a smooth, quiet slide that has been tested over 100,000 open/close cycles
- North American Made

PANELS	PANEL SIZE	
QUANTITY	WIDTH	HEIGHT
3	108"	110"
	120"	
	144"	
4	144"	



STILE PROFILE

Standard Sizes

- 108" x 110"
- 120" x 110"
- 144" x 110"
- Custom sizes available in both width & height. Additional panels available based on opening width. Contact us for more information

Specifications

- Clear Mirror | Double-sided 2.8mm with Safety Backing
- White/Black Back Painted Glass | Double-Sided 2.8mm with Safety Backing
- Semi-Opaque Glass | 6mm Frosted Laminated Glass
- Clear Glass | 6mm Frosted Laminated Glass

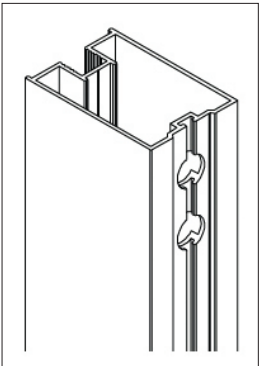
Closet Doors

Extruded Aluminum Bypass | Bottom Roll System

In fashionable hospitality and commercial environments, interior designers are always on the lookout for stylish products that will enhance the decor of guest rooms while adding to the visitor experience for the busy commercial or vacation traveler. These extruded aluminum doors combine the benefits of quality, lightweight stile and rail construction with a fully glazed glass appearance to let light in or reflect light to brighten the environment.



PANELS		PANEL SIZE	
QUANTITY		WIDTH	HEIGHT
2		48"	80"
		60"	
		72"	
		84"	
		96"	
3		108"	



STILE PROFILE

QUANTITY		WIDTH	HEIGHT
2		48"	96"
		60"	
		72"	
		84"	
		96"	
3		108"	

7035 | BOTTOM ROLL BYPASS ROOM DIVIDER / CLOSET DOOR SYSTEM

Top roll system with bottom guide track provides travel stability; ideal for wider panel(s) or used in a closet opening.

Frame Finishes



Satin

Insert Finishes



Black



Clear Mirror



Semi-Opaque Glass



White or Black Back Painted Glass



Clear Glass

Standard Sizes

- 48" x 80"
- 60" x 80"
- 72" x 80"
- 84" x 80"
- 96" x 80"
- 108" x 80" (3-panel)
- Custom sizes available in both width & height. Additional panels available based on opening width. Contact us for more information

Features & Benefits

- Modern 2" x 1-3/8" extruded aluminum frame is lightweight for a quiet opening and closing action
- Various frame and insert finishes and materials to match your interior decor
- Opening force meets the requirements of ADA
- Precision bearing rollers provide a smooth, quiet slide that has been tested over 100,000 open/close cycles
- North American Made

Specifications

- Clear Mirror | Double-sided 2.8mm with Safety Backing
- White/Black Back Painted Glass | Double-Sided 2.8mm with Safety Backing
- Semi-Opaque Glass | 6mm Frosted Laminated Glass
- Clear Glass | 6mm Frosted Laminated Glass

Renin

110 Walker Drive
Brampton ON, L6T 4H6
Canada

1141 Ryder Street
Tupelo MS, 38804
USA

1-800-493-5263

www.renin.com
info@renin.com
orders@renin.com

Follow us



DISTRIBUTED BY

HD SUPPLY

